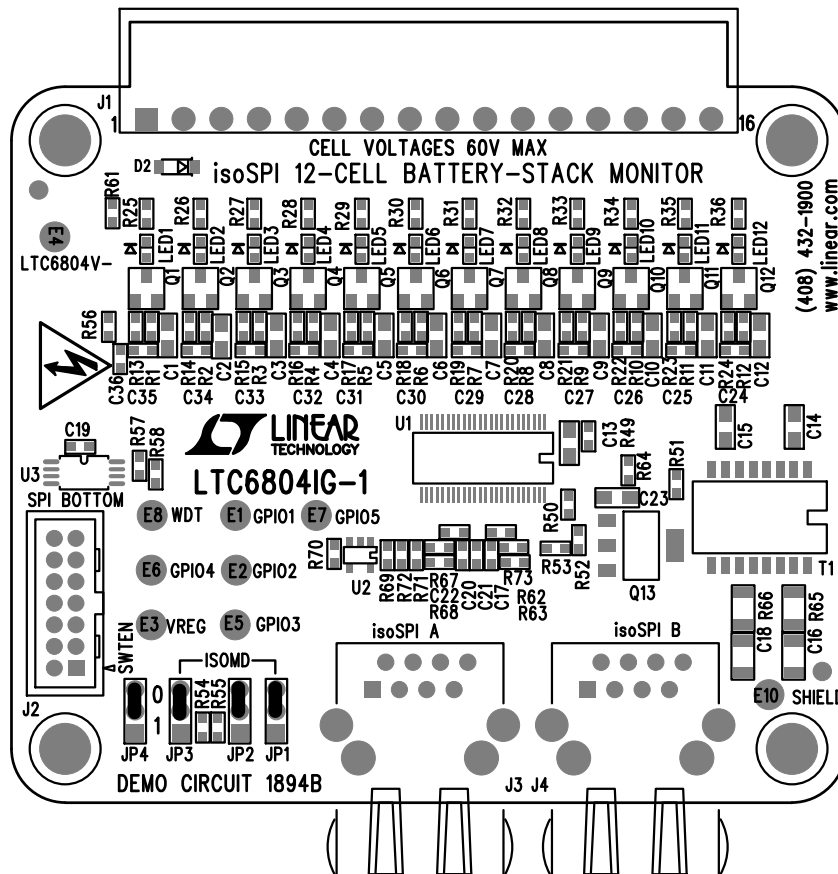
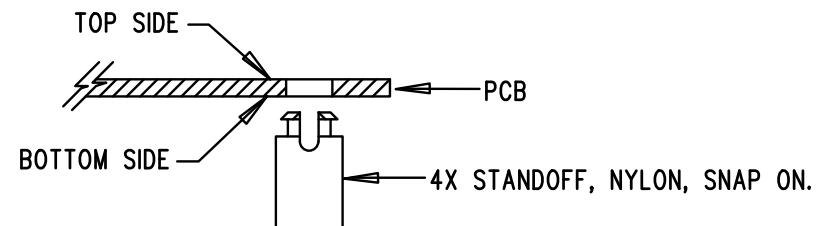


REVISION HISTORY


ECO	REV	DESCRIPTION	APP. ENG.	DATE
-	1	1ST PROTOTYPE	JON M.	12-16-11

NOTES: UNLESS OTHERWISE SPECIFIED

1. WORKMANSHIP SHALL BE IN ACCORDANCE WITH IPC-A-610.
2. ASSEMBLY PROCESS SHALL INCLUDE: REFLOW SOLDER TOP SIDE SMD. MAXIMUM SOLDER TEMPERATURE IS 240 DEGREES CELSIUS.
3. PARTS TO OMIT WILL BE SPECIFIED ON THE BILL OF MATERIALS. LOCATIONS OF OMITTED PARTS SHALL BE FREE OF SOLDER. MASK THE SOLDER STENCIL WHERE SMT PARTS ARE OMITTED.
4. INSTALL SHUNTS AS SHOWN ON ASSY DRAWING.
5. DEPANELIZE BOARDS AFTER ASSEMBLY AND ROUTE-OUT THE BREAKOUT TABS ON FOUR SIDES OF THE BOARD EDGE.
6. DO NOT APPLY ANY KIND OF ASSEMBLY STAMP OR QA STAMP TO ANY BOARD.
7. INSTALL 4 STANDOFFS AT 4 LOCATIONS AS SHOWN BELOW:



APPROVALS

PCB DES.	AK	 <div> 1630 MCCARTHY BLVD MILPITAS, CA 95035 PH: (408)432-1900 www.linear.com LTC CONFIDENTIAL- FOR CUSTOMER USE ONLY </div>		
APP ENG.	JON M.			
		TITLE: TOP ASSEMBLY DRAWING		
		isoSPI 12-CELL BATTERY-STACK MONITOR		
		SIZE N/A	IC NO. LTC6804IG-1 DEMO CIRCUIT 1894B	REV. 1
SCALE = NONE		FILENAME: DC1894B-1.PCB		SHT 1 OF 1